

BOUNDLESS OUTDOOR EXPLORATION WITHIN YOUR REACH



NE Series Thermal Imaging Binocular

COMPANY PROFILE

Chengdu Jingpin Night Vision Optoelectronics Technology Co., Ltd. (JPNVision), a subsidiary of Vital Optics Technology Co., Ltd. (Stock Code: SZ 300489), specializes in pioneering infrared thermal imaging technology. We offer a wide array of products, from infrared cores and thermal imaging modules to night vision and visual perception devices, catering to a global clientele alongside tailored solutions. Leveraging cutting-edge proprietary technology and a commitment to customer satisfaction, JPNVision represents the forefront of industry innovation. We are devoted to enhancing human sensory experiences and shaping a new era in the world of perception.

+86 400-661-8812

JPNVision@votinfrared.com

en.jpnavision.com

9th Floor, Building E, Technology Incubation Park, 1480 North Section of Tianfu Avenue, Gaoxin District, Chengdu, China



DEALER



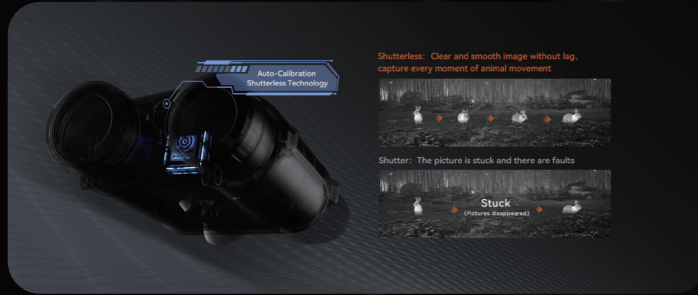
FACEBOOK



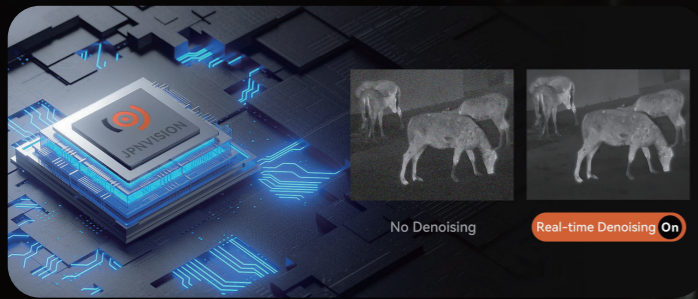
LINKEDIN

*The above data and content are for reference only. In case of any changes or adjustments, no further notice will be given. The actual product shall prevail. All the content on this screen/page should not be construed as the benchmark parameters upon product delivery or as an implication of the product's usage effect.

Model	NE-Q55	
Specification	Infrared	Visible Light
Resolution, pixels	640×512 /12μm	2592×1944/2.0μm
Objective Lens	55mm F1.0	25mm F1.8
Field of View	7.94° ×6.37°	11.8° ×8.9°
Frame Rate	50Hz	30Hz
Identification Range (Human)	650m	900m
Recognition Range (Human)	1300m	1800m
Detection Range(Human)	5200m	7100m
Visual Magnification	1~3.5	1~2.4
Eyepiece Diopter	-5~+5	
Wavelength	1535nm	
Max Measuring Range	Human/2300m Car/5000m	
Measuring Accuracy	±0.5m~±2m	
Positioning	GPS & BeiDou Dual Positioning	
Horizontal Positioning Accuracy	2.5m	
Electronic Compass	✓	
Display	0.39" OLED 1024x768	
Digital Zoom	1x-4x	
NETD	≤ 25mk@300K	
Observation Mode	Binocular	
Eye Relief	30mm	
Standby Time	≥ 6h	
Waterproof	IP67	
Memory	64G	
Wi-Fi Transmission	Wi-Fi	
Power Source	Four 18650 Li-ion Batteries	
Interface	Type -C/HDMI	
Weight (Without Battery)	≤ 1025g	
Dimensions	229×190×82mm	
Operating Temperature	-25°C ~+55°C	
Storage Temperature	-55°C ~+70°C	



Shutterless



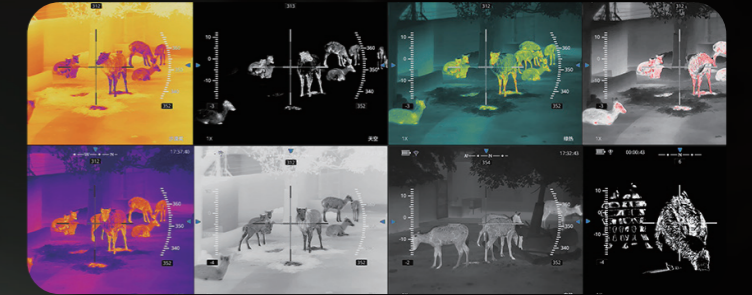
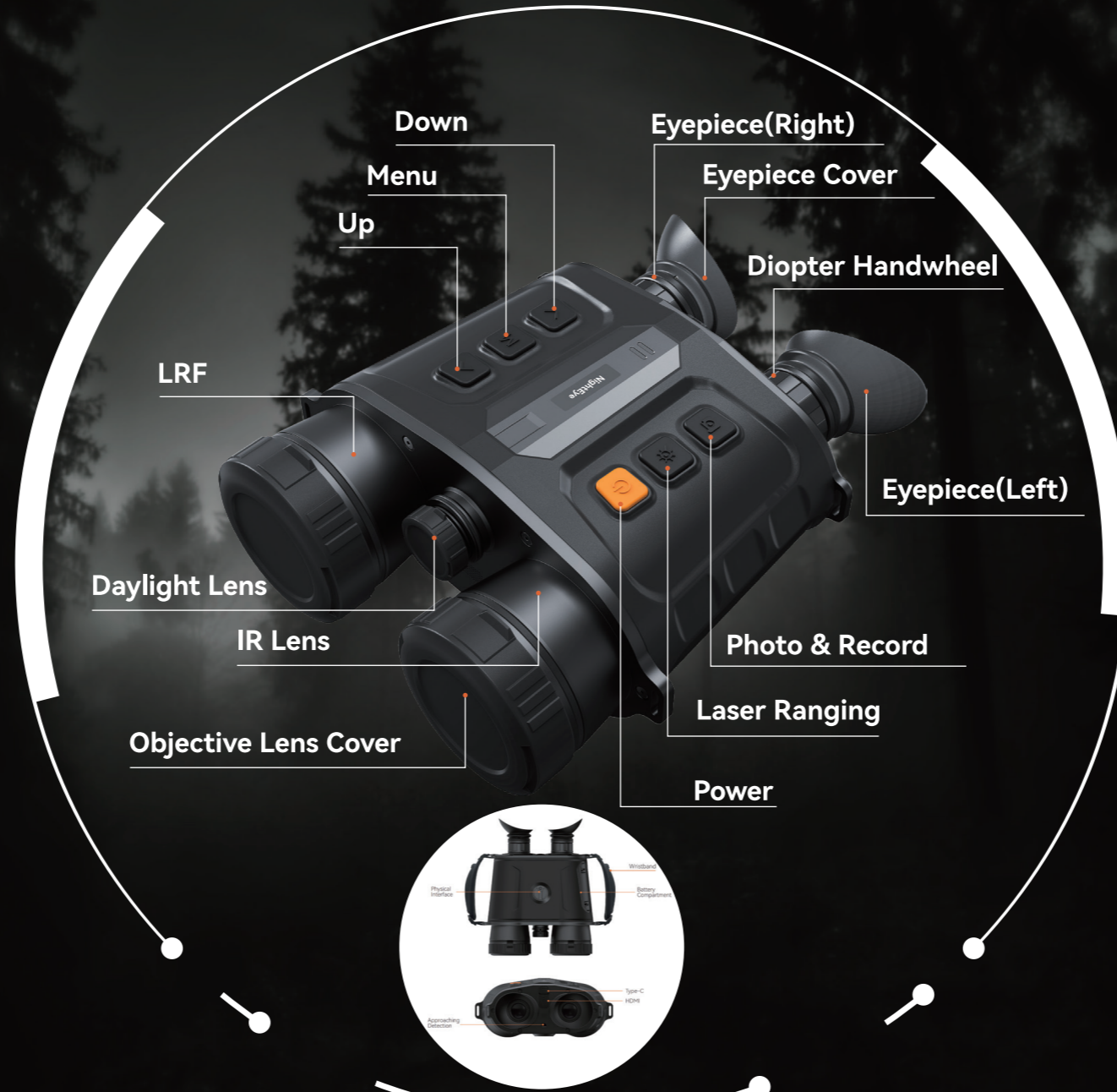
Real-time Denoising



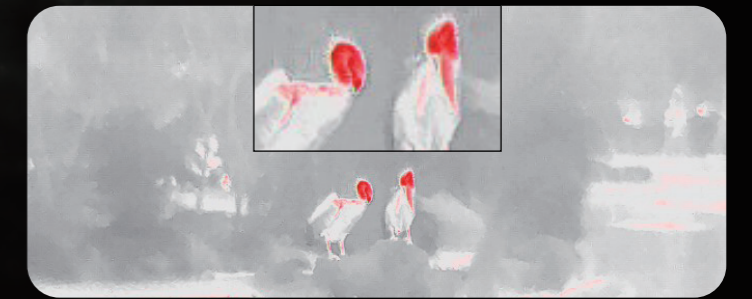
Laser Ranging 5000m



640×512 (Infrared) + 2592×1944 (Visible Light)



8 Kinds of Palettes



Picture in Picture



Hot Track



IP67